

WEMIN PROJECT

MIGRANT WOMEN EMPOWERMENT AND INTEGRATION

WHAT DO MIGRANT AND REFUGEE WOMEN NEED?



EMPOWERING & MENTORING SESSIONS

The WEMIN project includes the implementation of activities of empowering and mentoring for migrant and refugee women. For this purpose, a questionnaire was structured and distributed in each partner's country in order to analyse the needs of women in terms of social, cultural and work inclusion. In total, 125 MR women participated in the interviews. Their answers highlighted the influence of two factors: the country where the woman lives in and the reason why they left their countries. The main needs reported by the MR women interviewed are identified as follows:

- To receive linguistic support to help understand doctors and nurses at the hospital
- To be orientated towards practical vocational courses supporting women's requalification
- To understand in-depth services related to immigration for the renewal of documents, asylum requests, citizenship demands
- To have more information on sexual and reproductive health and prescription of medicines (to understand their use and when they are necessary).

Thanks to the empowering and mentoring sessions implemented by the 9 project partners, the MR women taking part in WEMIN will have their needs addressed.

HOW WEMIN CHANGED THE LIVES OF ITS PARTICIPANTS

European Union's Directorate General for Migration and Home Affairs wanted to know more about our project. One of the things that all the partners communicated about was the impact of WEMIN on MR women's lives. Interestingly, the impact is quite similar in the 8 partner countries.

The women have opened up to the host society, have built friendships, support each other and have developed curiosity for the new society and their new city. They smile more, have gained more self-confidence and have enriched their sense of belonging. Naturally, they have improved their language skills, which they use to interact with the local community and to continue learning.

...We are all so happy to see the impact of WEMIN in MR women's lives!



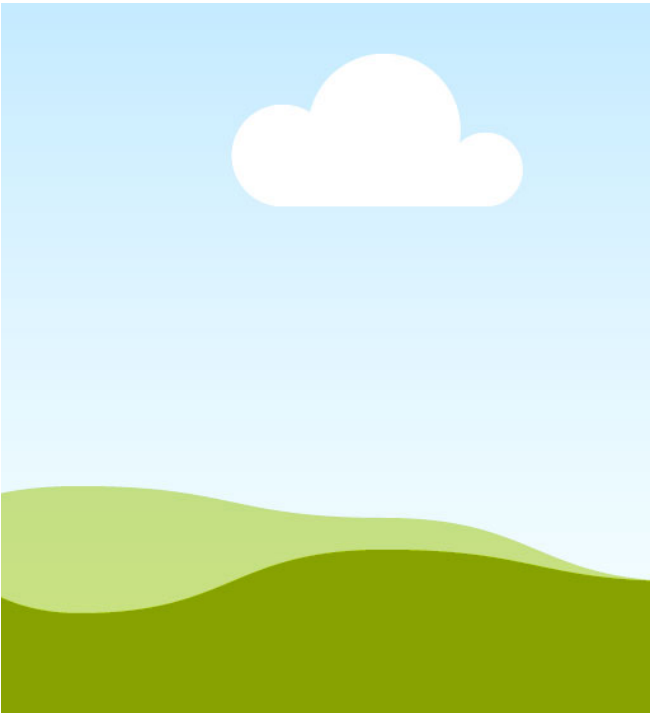
**"WOMEN HAVE
OPENED UP TO THE
HOST SOCIETY AND
BUILT
FRIENDSHIPS"**

INTERNATIONAL WOMEN'S DAY – JOINT CAMPAIGN AND WORKSHOPS

WEMIN's partnership considered that the 8th of March was the perfect opportunity to launch a campaign on social media to raise awareness on the struggles of migrant and refugee women living in Europe. The joint campaign promotes an idea of solidarity and common challenges between the women, without being patronizing or over dramatic. At the same time, it is a call for participants for the future activities of WEMIN that will reunite MR women and women from the host community to do art, crafts and culture workshops together. These activities will allow the participants to meet, express themselves, celebrate diversity and explore each other's cultures. All the partners posted on their social media accounts on the 8th, the 15th and the 22nd of March, and the last publication will be posted on the 15th of April. Follow #WEMINproject and #WEMIN on social media to stay tuned!



SOUTHSIDE PARTNERSHIP HOST INTERNATIONAL WOMEN'S DAY BREAKFAST



On 6th March 2019 Southside Partnership, one of the partners in the WEMIN project, organised an International Women's Day Breakfast. These breakfasts are held at least six times a year in various locations in South County Dublin, Ireland. This is a drop-in event that runs over the course of a morning on a weekday, usually a Wednesday, each one has a specific theme. The theme for this breakfast was International Women's Day 2019.

One hundred women from 34 different countries attended the event. Among the participants were women who are attending English classes through the WEMIN project. In the morning, Daniela Naab, coordinator of WEMIN in Ireland, talked about upcoming local elections and reminded people that if they were resident in Ireland they may be entitled to vote. She also informed people of the new Job Skills workshops being organised as part of WEMIN.

FIRST TRAINING CYCLE IN ATHENS

The 1st Training cycle in Athens, Greece was completed on 12th March 2019. Initially, 20 women expressed their interest and registered in the courses but due to various reasons (e.g. family obligations, interest to learn another foreign language etc) 14 women finished the training. The training has taken place in a public primary school with the support of the Municipality of Athens through the action of "Open Schools" which is also funded by Stavros Niarchos Foundation and John S. Latsis Public Benefit Foundation.



WEMIN SHORT POLICY GUIDE IN “TRAVESSIA” INTERNACIONAL CONFERENCE IN LISBON

Associação Renovar a Mouraria held an international conference on the cross-border issue of migrant and refugee women, in the past 15th and 16th March, Lisbon, called ‘Travessia – Women and girls searching for shelter’

Within the framework of this conference, the Short Policy Guide was presented to all parliamentary groups of the Portuguese Assembly of the Republic. The challenge was to build a set of objective recommendations within the national context, based on the guide and testimonies of refugee women who were shared the same afternoon, at another time of the conference, to be read in the conclusion moment of the last day of the event.



**MORE INFORMATION
ON WEMIN'S WEBSITE
WWW.WEMIN-PROJECT.EU**

**USE #WEMIN TO FOLLOW
OUR ACTIVITIES ON SOCIAL
MEDIA!**

CONTACT US!

For questions and cooperation:

Sissie Theodosiou, Hellenic Open University, DAISy Research Group (lead partner)
sissie.theodosiou@gmail.com

For communication and visibility:

Elisabetta Uroni, ALDA – European Association for Local Democracy
elisabetta.uron@aldaintranet.org



WEMIN has been funded with support from the European Commission through the Asylum, Migration and Integration Fund (AMIF) under agreement n. 776211. This newsletter reflects the views only of the author, and the Commission cannot be held responsible for any use which may be made of the information contained therein.



WEMIN
Migrant Women
Empowerment and Integration